

E_b

Kyoumen no Nami (TV Size)

from Land of the Lustrous

Composed by Terui Yoshimasa

Performed by YURiKA

Transcribed by デス罌先生

Slightly mathy pop (Mohs hardness 3.5) ♩ = 175

Verse GΔ⁹/C



Bass and drums out, rhythm section 3/8 polymeter feel but restart every four bars

(GΔ⁹/C)



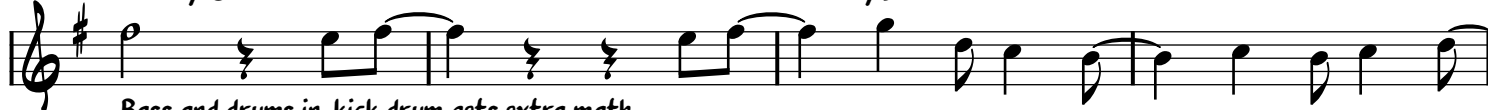
(GΔ⁹/C)



(GΔ⁹/C)



Verse 2 GΔ⁹/C



Bass and drums in, kick drum gets extra math

GΔ⁹/C



GΔ⁹/D

GΔ⁹

GΔ⁹/C



GΔ⁹/D

GΔ⁹

C#-7^{b5}

GΔ⁹/C



GΔ⁹/D

GΔ⁹/E

Chorus $C\Delta^7$ $C-\Delta^7\flat^5$

E^- G G^7

$C\Delta^7$ $C-\Delta^7\flat^5$

E^- G B

Outro $C\Delta^7$ $C-\Delta^7\flat^5$

E^- G $G\#^{\circ}7$

$C\Delta^9$