

Bass

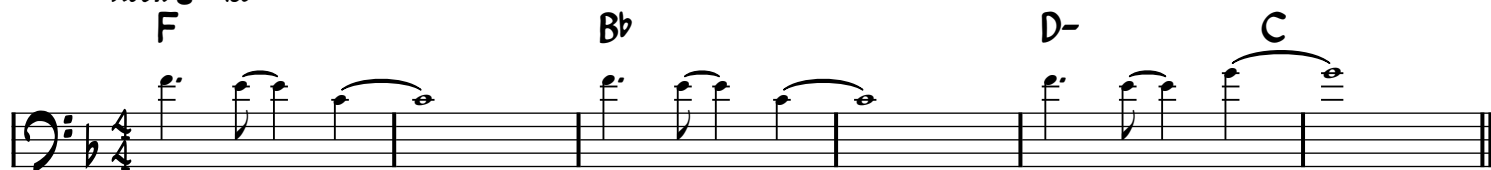
GRAVITY Ø (TV Size)

from Star Driver

Composed by Aqua Timez

Transcribed by デス罌先生

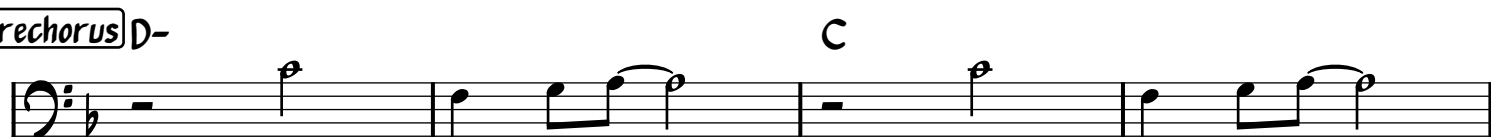
Rock ♩ = 185



Verse



Prechorus



Chorus (F) A- G-

The musical notation for the chorus is written on a single staff with a bass clef and a key signature of one flat (B-flat). The melody consists of two measures. The first measure starts with a quarter rest, followed by a half note F2, a quarter note G2, a quarter note A2, and a half note Bb2. The second measure starts with a quarter rest, followed by a half note F2, a quarter note G2, a quarter note A2, and a half note Bb2. The notes are connected by a slur, indicating a melodic line. The lyrics 'Chorus' are written above the first measure, and the notes (F), (A-), and (G-) are written above the corresponding notes in the second measure.

Musical notation for the bass line of 'The Rose Tree'. The key signature is one flat (B-flat). The melody consists of the following notes: G2 (quarter), A2 (quarter), Bb2 (quarter), C3 (quarter), Bb2 (quarter), A2 (quarter), G2 (quarter), F2 (quarter), E2 (quarter), D2 (quarter), C2 (half). The notes are written on a bass staff with a treble clef. The first measure is marked with a 'p' (piano) and a '(G-)' above it. The second measure is marked with a 'Bb' above it. The third measure is marked with a 'Bb-' above it. The fourth measure is marked with an 'F' above it.

[illegible]

Musical notation for the bass line of 'The Rose Tree'. The key signature is one flat (B-flat). The notation shows a sequence of chords: (D-), C, B°, Bb, and D-. The melody consists of eighth and quarter notes, with some notes beamed together. There are rests indicated by a 'z' symbol.

The musical notation shows a bass line starting with a double bar line. The first measure contains two notes: D⁻ (half note) and C (half note), both tied across the bar line. The second measure contains B° (quarter note). The third measure contains B^{b-} (quarter note). The fourth measure contains G⁻ (quarter note).

(G-) F/A B \flat D \flat F