

Bass

L's Theme

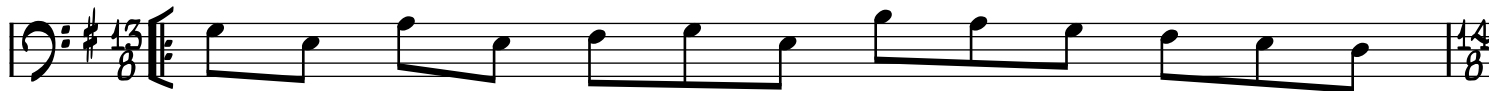
from Death Note

Composed by Hideki Taneuchi

Transcribed by デス罌先生

♩ = 134

[A] E-



Layer in percussion, bass on repeats

E-

Play 8x



[B] E-

E-/C



E-/A

E-/B



[C]

E-

D/F# E-

D E-

D/F# E-

D



[D]

Half-time feel

D-



E-

D/F# E-

D E-

D/F# E-

D



D-



A-

G

A-

G/B

A-

G

A-

G/B

D.C.

