

Alto

# Kyoumen no Nami (TV Size)

from Land of the Lustrous

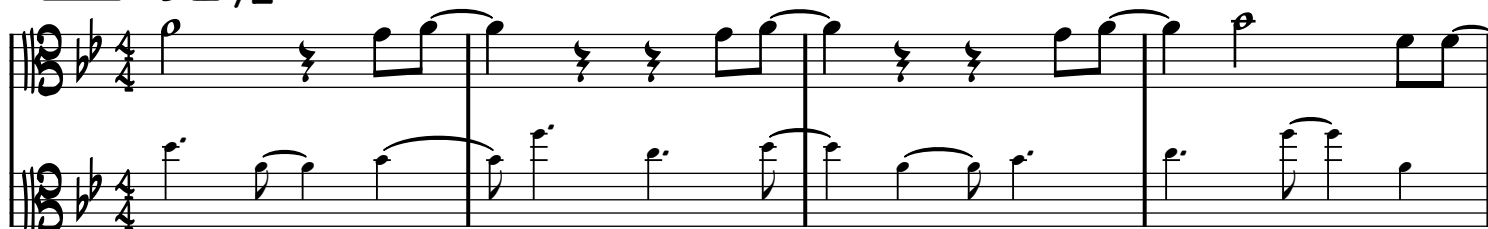
Composed by Terui Yoshimasa

Performed by YURiKA

Transcribed by デス罌先生

Slightly mathy pop (Mohs hardness 3.5) ♩ = 175

**Verse** B♭Δ<sup>9</sup>/E♭



Bass and drums out, rhythm section 3/8 polymeter feel but restart every four bars

( B♭Δ<sup>9</sup>/E♭ )



( B♭Δ<sup>9</sup>/E♭ )



( B♭Δ<sup>9</sup>/E♭ )



**Verse 2** B♭Δ<sup>9</sup>/E♭



Bass and drums in, kick drum gets extra math

B♭Δ<sup>9</sup>/E♭

B♭Δ<sup>9</sup>/F

B♭Δ<sup>9</sup>



B♭Δ<sup>9</sup>/E♭

B♭Δ<sup>9</sup>/F

B♭Δ<sup>9</sup>



E-7♭5

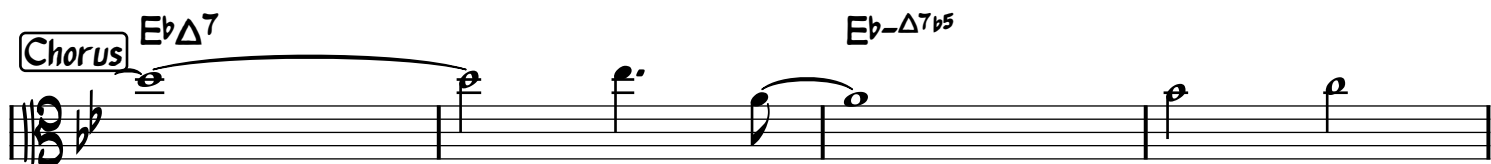
B♭Δ<sup>9</sup>/E♭

B♭Δ<sup>9</sup>/F

B♭Δ<sup>9</sup>/G



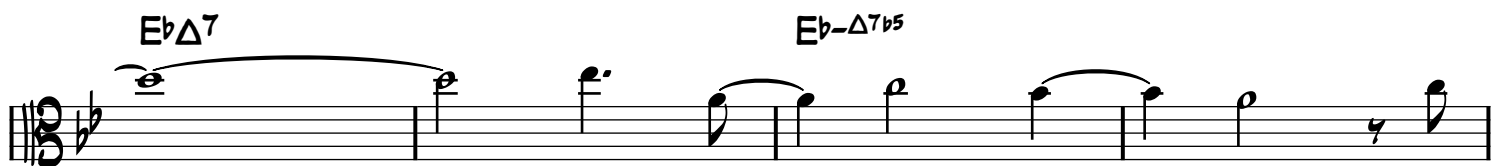
**Chorus**  $E^b\Delta^7$   $E^b-\Delta^7b5$



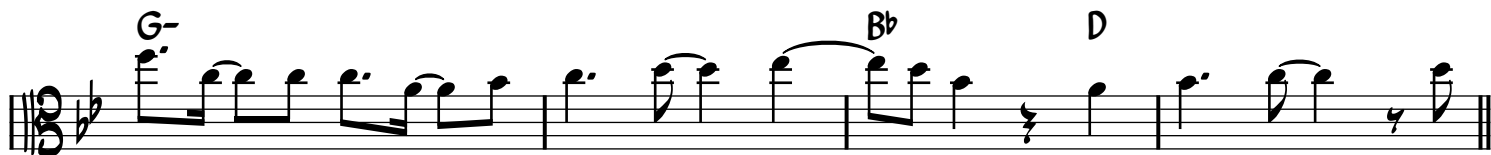
$G^-$   $Bb$   $Bb7$



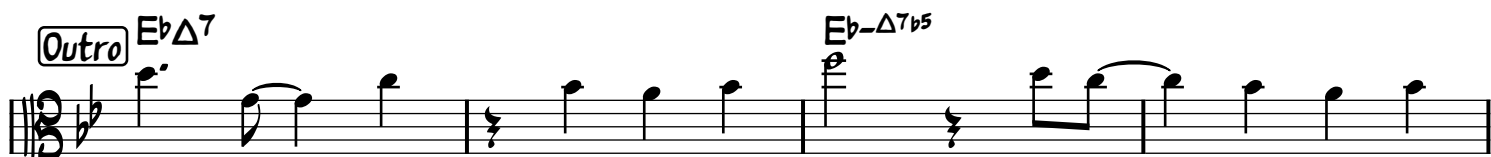
$E^b\Delta^7$   $E^b-\Delta^7b5$



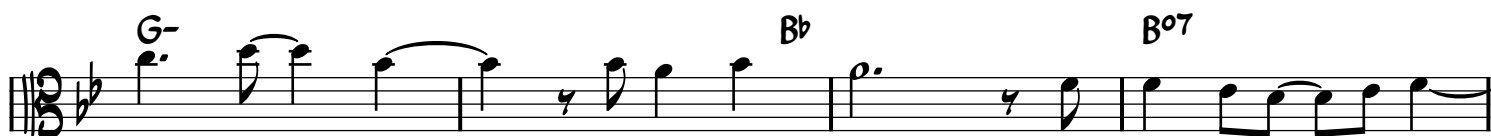
$G^-$   $Bb$   $D$



**Outro**  $E^b\Delta^7$   $E^b-\Delta^7b5$



$G^-$   $Bb$   $B^o7$



$E^b\Delta^9$

